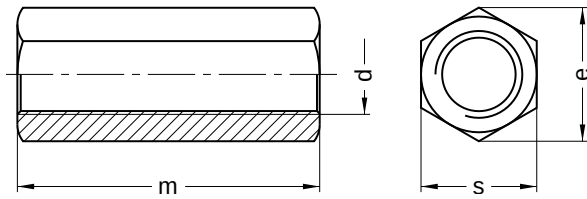
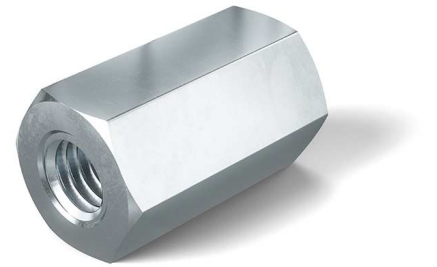


B 6334

Hexagon coupling nuts

Height = 3d

Steel | zinc-plated | Cr(VI)-free | Metric thread



Diameter (d)	e nominal size	m nominal size	s nominal size	Pitch (P)	Tool size
M6	11.05	18	10	1.00	SW 10
M8	14.38	24	13	1.25	SW 13
M10	18.90	30	17	1.50	SW 17
M12	21.10	36	19	1.75	SW 19
M16	26.75	48	24	2.00	SW 24
M20	33.53	60	30	2.50	SW 30
M24	41.60	72	36	3.00	SW 36
M30	53.10	90	46	3.50	SW 46

All technical data refer to the measure mm

