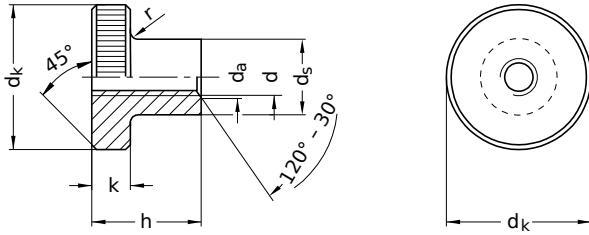


DIN 466
Knurled nuts

High version

Steel 05 | zinc-plated | Cr(VI)-free | Metric thread



Diameter (d)	d _a		nominal size	d _k		d _s		h		k		r nominal size	Pitch (P)
	min.	max.		min.	max.	min.	max.	min.	max.	min.	max.		
M3	3	3.45	12	11.65	12.35	5.70	6	7.14	7.5	2.25	2.5	0.5	0.50
M4	4	4.60	16	15.65	16.35	7.64	8	9.14	9.5	3.20	3.5	0.5	0.70
M5	5	5.75	20	19.58	20.42	9.64	10	11.07	11.5	3.70	4.0	1	0.80
M6	6	6.75	24	23.58	24.42	11.57	12	14.57	15.0	4.70	5.0	1	1.00
M8	8	8.75	30	29.58	30.42	15.57	16	17.57	18.0	5.70	6.0	2	1.25
M10	10	10.80	36	35.50	36.50	19.48	20	22.48	23.0	7.64	8.0	2	1.50

All technical data refer to the measure mm

