

# RIVKLE® Hand operated setting tool

## RIVKLE® BRK 10 manual lever type setting tool

The manual installation tool is used to set RIVKLE® blind rivet nuts made of aluminium (M5–M10), steel (M5–M8) and stainless steel (M5–M10).

**Delivery scope:**

- Tool
- Threaded mandrels and anvils (M5–M10)

**Function:**

Screwing and unscrewing of the RIVKLE® blind rivet nut using a drill mandrel. Riveting through optimum lever action. Easy-to-use quick stroke adjustment.

Technical information can be found on the last page.



Diameter (d)	Article number	Weight g
M 5 - M 10	23512000000	1900

All technical data refer to the measure mm



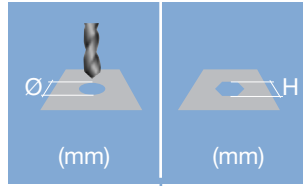


Head diameter  
Overall length  
Thread size



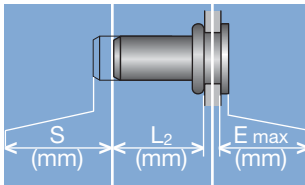
**Grip range**

Defines the range of total thickness of the customers part (even if it consists of more than one layer)



**Hole geometry**

If round → diameter  
If hexagonal → width across flats



**Head projection after setting**

Variable according to the application (setting load, material substrate, etc.)

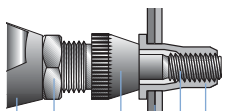
**Blind side projection after installation**

Defines the clearance needed on the blind side (cannot be used for quality control)

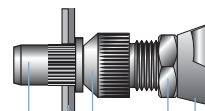
**Setting stroke**

Difference of total length before and after installation

**RIVKLE® Nut**



**RIVKLE® Stud**



- RIVKLE®
- Mandrel\*
- Customers part
- Anvil\*
- Counter nut
- Setting tool

\*in accordance to chosen RIVKLE®\*

All technical data refer to the measure mm

